

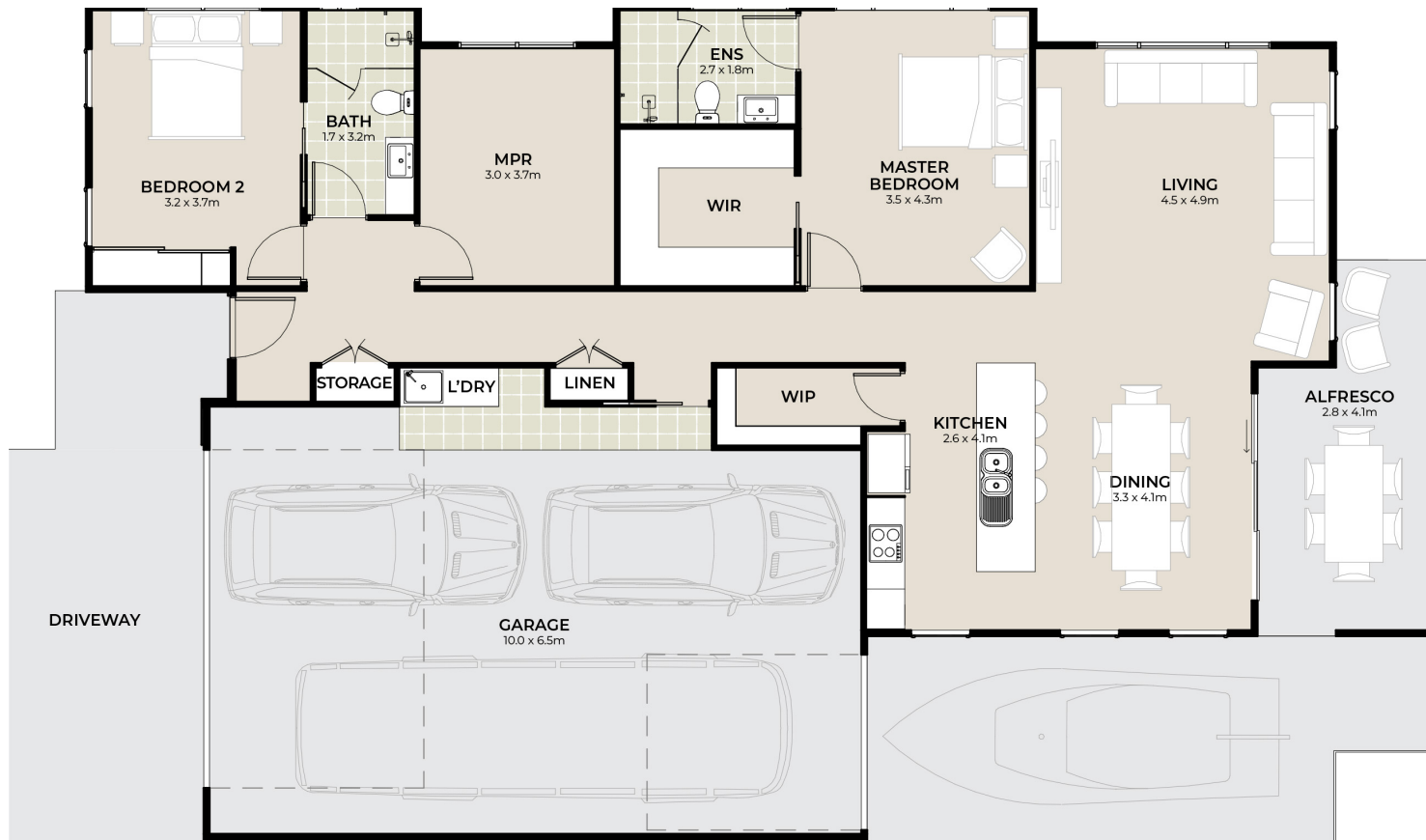
# CABLE BEACH

🛏️ 2 🔍 1 🧴 2 🚗 2 🚚 1 🚤 1



# CABLE BEACH | GOOD TIMES & LAZY DAYS

 2
  1
  2
  2  
 1
  1



This spacious home has it all with room for you and family to stay comfortably.

A special feature of this home is the oversized garage with room for your RV, caravan or boat.

Catchup with friends over a glass of wine in the kitchen with the walk-in pantry making it easy to keep any mess out of sight.

Enjoy a meal in the dining room that looks out onto the alfresco area and forms the heart of the home. The open-plan dining and living spaces make social living simple.

## FLOORSPACE

Area based on external wall footprint

Living Area	130.6m <sup>2</sup>
Alfresco + Porch	19.8m <sup>2</sup>
Garage	69m <sup>2</sup>
<b>Total</b>	<b>219.4m<sup>2</sup></b>

Visit our Sales & Information Centre at 5 Serenity Drive, Eli Waters

1300 585 882 | [thyme.com.au](http://thyme.com.au)

© Thyme Lifestyle Resort. Thyme Lifestyle Resort reserves the right to change home design and floorplans at any time without notice. Artist impression only. Please note floorplans and designs are not to scale. Not all items shown are included. Refer to schedule for fixtures, fittings and inclusions. Document is for marketing purposes only. V20230222.1