

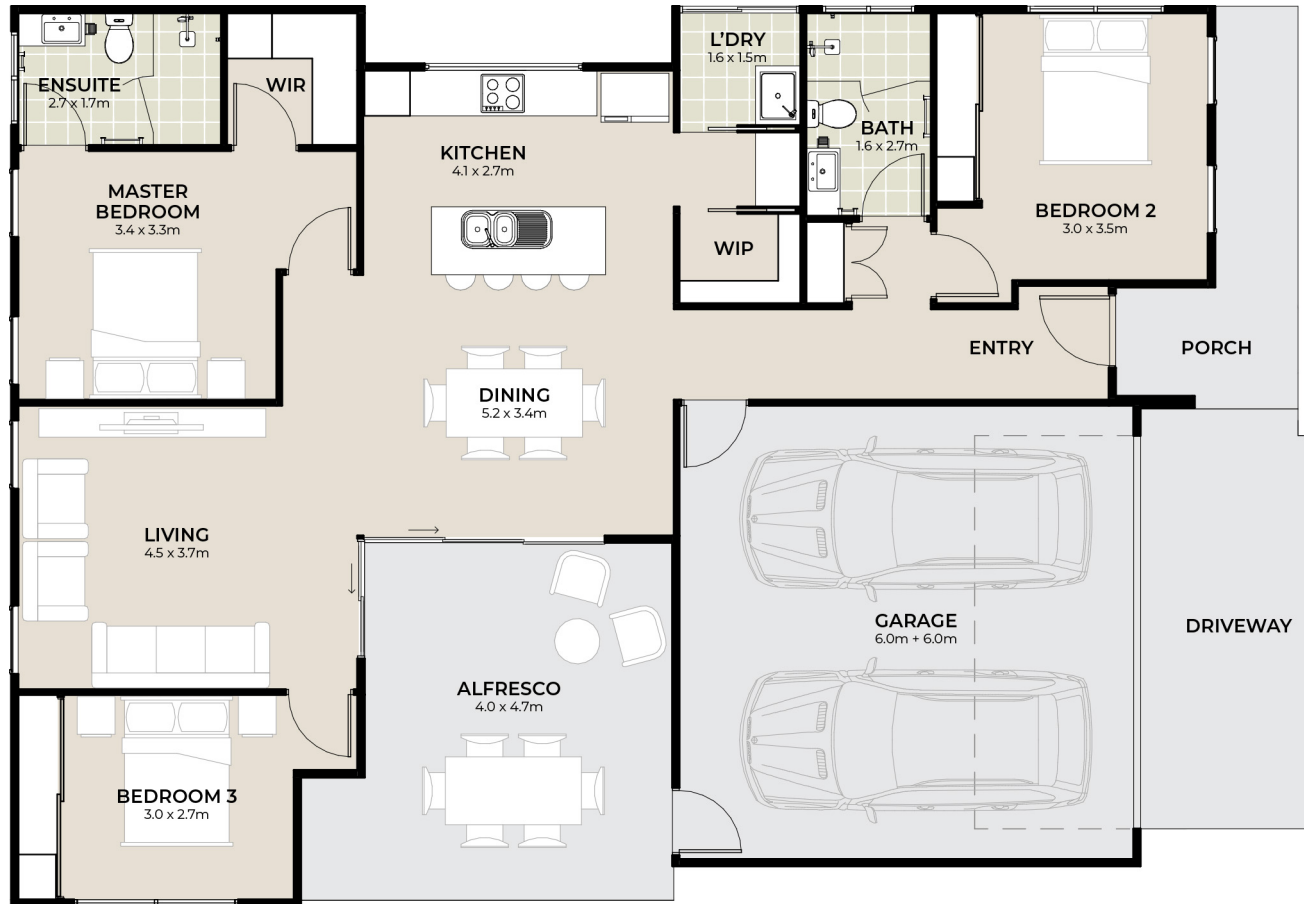
# HAMILTON

3 2 2



# HAMILTON | ENTERTAINING IN STYLE

 3
  2
  2



Spacious and perfect for entertaining, the Hamilton has it all. This home design exudes luxury with its floorplan created with the entertainer in mind.

Fall in love with this open-plan layout where the dining and living areas flow harmoniously through to a large alfresco area, with two sets of stacker doors allowing you to bring the outside in.

Enjoy preparing meals in the stylish kitchen complete with butler's pantry and island stone benchtop.

Enter the master bedroom and feel as though you are entering a sanctuary with its generous proportions, a walk-in robe and an ensuite.

## FLOORSPACE

Area based on external wall footprint

Living Area	115m <sup>2</sup>
Alfresco + Porch	26m <sup>2</sup>
Garage	38m <sup>2</sup>
Total	179m <sup>2</sup>

Visit our Sales & Information Centre at 5 Serenity Drive, Eli Waters

1300 585 882 | [thyme.com.au](http://thyme.com.au)

© Thyme Lifestyle Resort. Thyme Lifestyle Resort reserves the right to change home design and floorplans at any time without notice. Artist impression only. Please note floorplans and designs are not to scale. Not all items shown are included. Refer to schedule for fixtures, fittings and inclusions. Document is for marketing purposes only. V20230222.1