

Illuka



Artist Impression

2 | 2 | 1.5

FLOORSPACE

Area based on external wall footprint

Living Area	182.6m ²
Alfresco + Porch	22.1m ²
Garage	32.2m ²
Total	136.9m ²

MAXIMISES SPACE AND LIFESTYLE

An open plan design that is packed full of features including a study nook. Large stacker doors to the expansive undercover alfresco make it the perfect place for entertaining.

You will love cooking and socialising with friends in the kitchen with its U-shaped design, stone benchtops and its connectivity to the living and dining spaces.

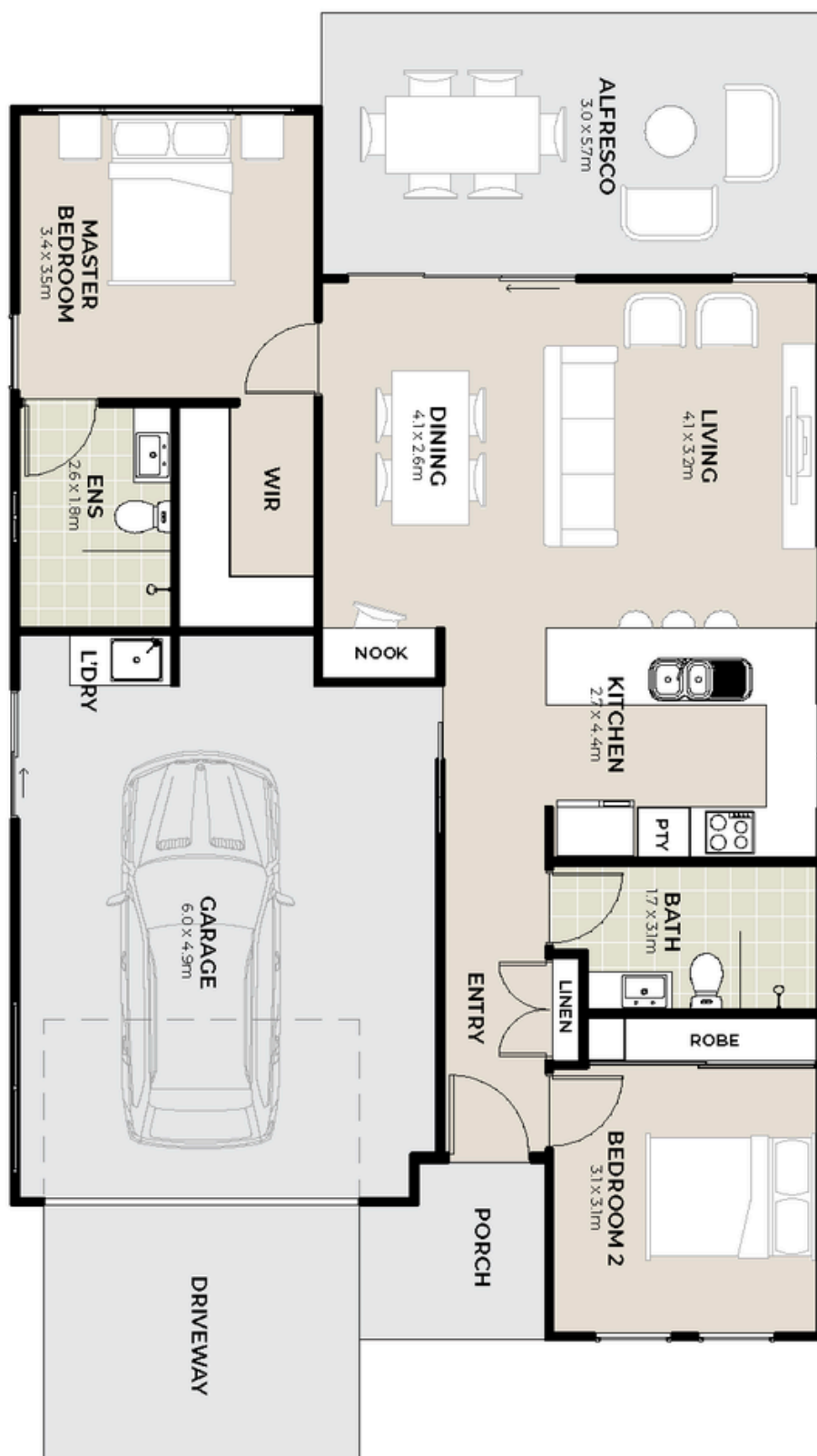
The master bedroom is generous on space with a large built-in wardrobe and ensuite.

Thyme Lifestyle Resort Hervey Bay
5 Serenity Drive, Eli Waters, QLD 4655

herveybay.thyme.com.au
1300 585 882 | herveybay@thyme.com.au

THYME
LIFESTYLE RESORT

HERVEY BAY



Artist impression.
Not to scale and subject to change and approvals.